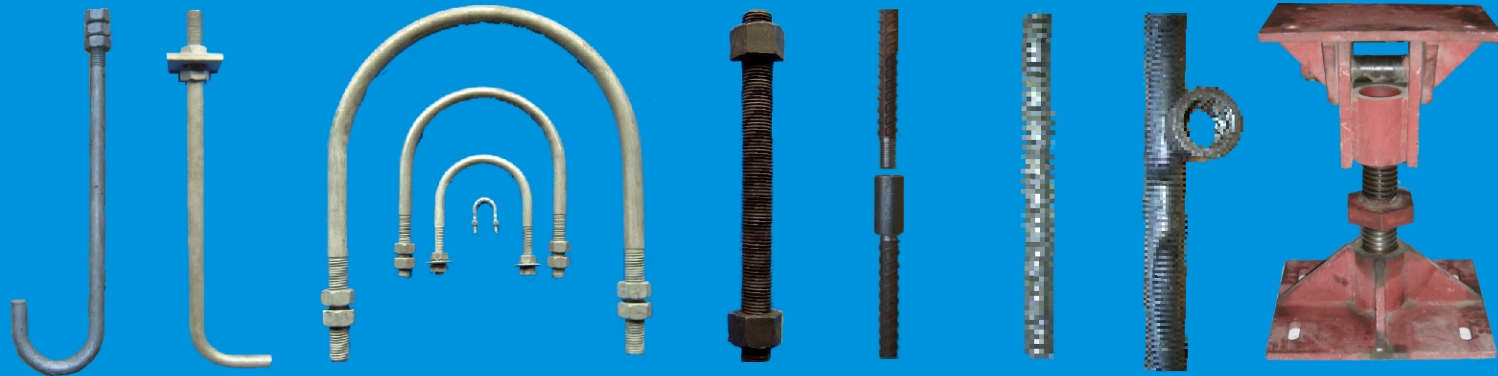
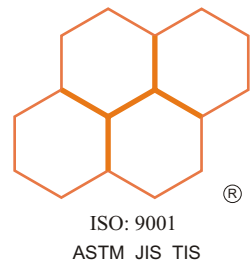


# บริษัท ไทยโตคอนส์ จำกัด Thai Tok Con Co.,Ltd

37/14 ม.12 ถ.บางนาตราด กม 12 ต.บางพลีใหญ่ อ.บางพลี จ.สมุทรปราการ 10540  
 37/14 Moo.12 Bangna-Trad Km.12 Bangplee-Yai Dist.,Bangplee, Samutprakarn 10540

Tel.02-730-7600-2, Fax. 02-730-7603 www.thaianchorbolt.com, email: thaitokcon@yahoo.com



H.D.G. Foundation J-bolt , L-bolt, U-bolt ,

Stud Bolt A193, B7 ,A194 2H Nut ,

Tie Rod Bar

Screw Jack Turn Buckle



H.D.G. Pulling Iron. H.D.G. Hex .Head Bolt , Nut. Rod Coupling.

H.D.G. Anchor Bolt.

Spring Nut

Tapper Washer



Beam Clamp

Beam Hanger

Pipe Clamp Wing Nut

Pipe Bone Joint

Squire Washer

Underground Rack

Hand Rail

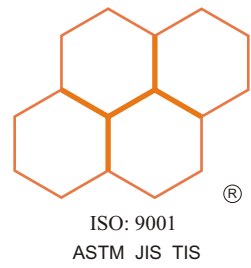
ALL dimensions are recommended for standard ASTM. JIS. UL. DIN. ISO. TIS. As A307, A325, F10T, GR.8.8 4.6, 10.9 , A193/B7 A194/2H, 4H, A70-2,4 Custom made to special dimensions also available. And material can use by Low Carbon steel, Alloy steel , Stainless Steel , As A36 , Ss400 Ss41,S45C, SCM440, SUS304, 316,316L.The Product shall be bare finished Special coating is available Electro-galvanized, Zine Plating, H.D.G. Fluorocarbon Coating.



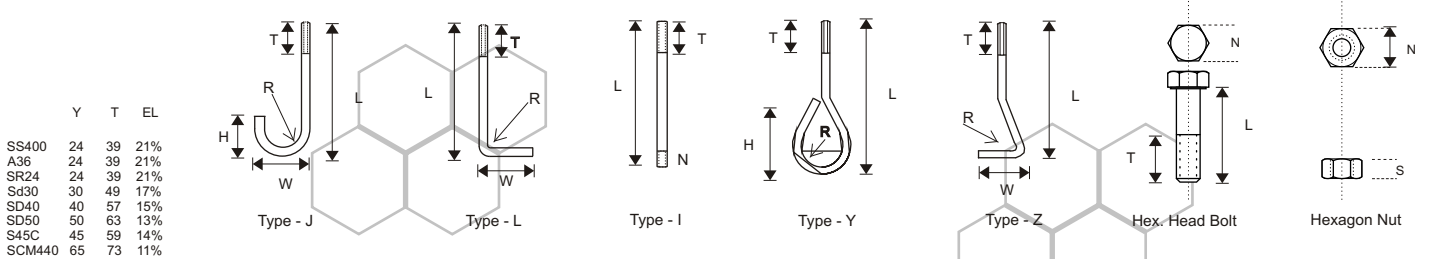
## Factory

5/28 ม.12 ซอยชนสิทธิ์ ถ.เทพารักษ์ กม 15 ต.บางแก้ว อ.บางพลี จ.สมุทรปราการ 10540

5/28 Moo.12 Soo Tanasit Teparat Km.15 Bangkaot Dist.,Bangplee, Samutprakarn 10540



Foundation Anchor Bolts ( Size M10---M300 or UNC 3/8"---UNC12" )

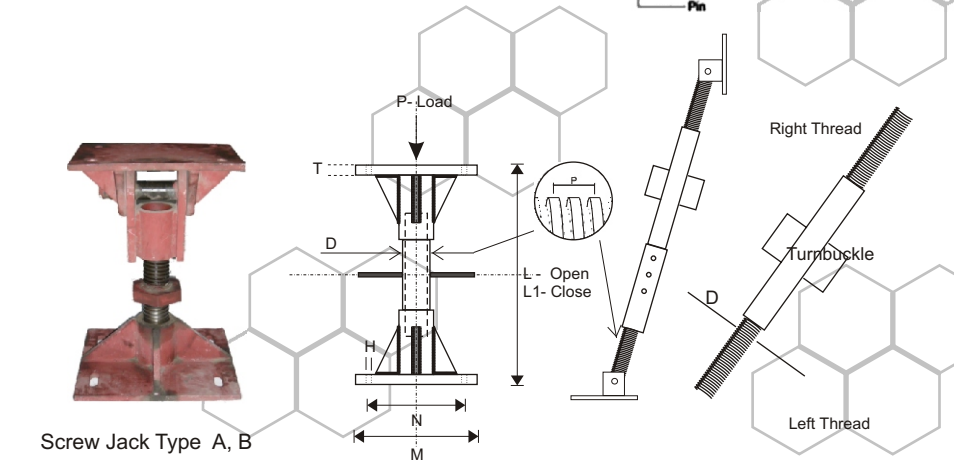
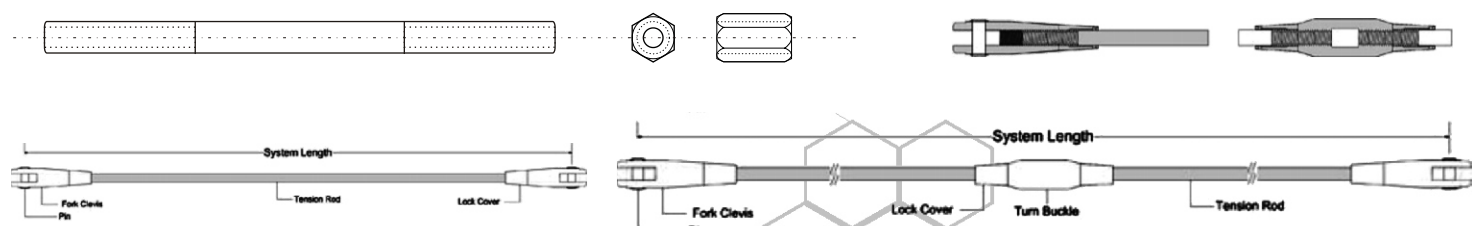


	Y	T	EL
SS400	24	39	21%
A36	24	39	21%
SR24	24	39	21%
Sd30	30	49	17%
SD40	40	57	15%
SD50	50	63	13%
S45C	45	59	14%
SCM440	65	73	11%

Bolt Size	M.A.L. Kg.	Type - J					Type - L				Type - I			Type - Y				Type - Z				Hex. Head Bolt				Hexagon Nut		
		L	T	W	H	R	L	T	W	R	L	T	N	L	T	R	H	L	T	W	R	N	T	T1	T2	N	S	P
M12	1650	300	80	72	72	25	300	80	72	15	300	80	20					300	80	72	15	19	30	36	49	19	10	1.75
M16	2250	465	100	76	76	30	465	100	76	20	465	100	30					465	100	76	20	24	38	44	57	24	13	2.0
M20	3520	580	100	100	100	40	580	100	100	25	580	100	32					580	100	100	25	30	46	52	65	30	16	2.5
M22	4350	650	100	100	100	40	650	100	100	30	650	100	35					650	100	100	30	32	50	56	69	32	18	2.5
M24	5070	700	100	114	114	45	700	100	114	40	700	100	40	920	100	50	200	700	100	114	40	36	54	60	73	36	19	3.0
M27	7200	750	120	127	127	50	750	120	127	40	750	120	45					750	120	127	40	41	60	66	79	41	22	3.0
M30	8100	870	120	150	150	60	870	120	140	45	870	120	48	1090	120	60	200	870	120	140	45	46	66	72	85	46	24	3.5
M33	9350	950	120	173	173	70	950	120	150	50	950	120	50					950	120	150	50	50	72	78	91	50	26	3.5
M36	11800	1030	130	216	216	90	1030	130	180	60	1030	130	55	1300	130	70	240	1030	130	180	60	55	78	84	97	55	29	4.0
M39	13500						1100	140	200	70	1150	140	60					1100	140	200	70	60	84	90	103	60	31	4.0
M42	16200						1200	150	220	90	1300	150	65	1470	150	90	320	1200	150	220	90	65	90	96	109	65	34	4.5
M48	21300										1500	160	70	1630								75	102	108	121	75	38	4.5
M56	29500										1650	180	80	1900	180	100	360					(T, L < 125)(T2, L > 200)				85	45	5.0
M64	38900										1800	200	90	2120	200	120	400					T1, 200=>L>125mm				95	51	6.0

Fully or Both End Left and Right Threaded Stud and Coupling Nut.  
 Stud L<=2.0M Max. Size. M300 # UNC12" L>2.0M Max. Size M125 # UNC 5" is available

ผลิตได้ทั้งแบบเกลียว ชาย-ขวา เกลียวตลอดและสองข้าง พร้อมน็อตตัวเมีย. สัตัดยาวสั้นกว่า 2 M ทำได้ใหญ่สุด M300 ยาวกว่า 2 M ทำได้ใหญ่สุด M125



Size	D	M	N	T	H	L	L1	P t.
M37	200	140	12	18	359	514	20	
M50	250	175	15	21	365	520	40	
M65	250	175	15	21	365	520	50	
M75	250	175	15	21	365	520	60	
M87	300	220	18	25	371	520	70	
M100	350	260	18	25	371	520	75	
M120	350	260	20	25	378	522	85	
M150	400	300	22	27	424	584	90	
M200	450	300	25	30	430	590	100	

ALL dimensions are recommended for standard ASTM. JIS. UL. DIN. ISO. TIS. As A307, A325, F10T, GR.8.8 4.6, 10.9, A193/B7 A194/2H, 4H, A70-2.4 Custom made to special dimensions also available. And material can use by Low Carbon steel, Alloy steel, Stainless Steel, As A36, Ss400 Ss41, S45C, SCM440, SUS304, 316, 316L. The Product shall be bare finished Special coating is available Electro-galvanized, Zine Plating, H.D.G. Fluorocarbon Coating.